

Heartwork

# MASTER PLAN

---

# HEARTWORK MASTERPLAN



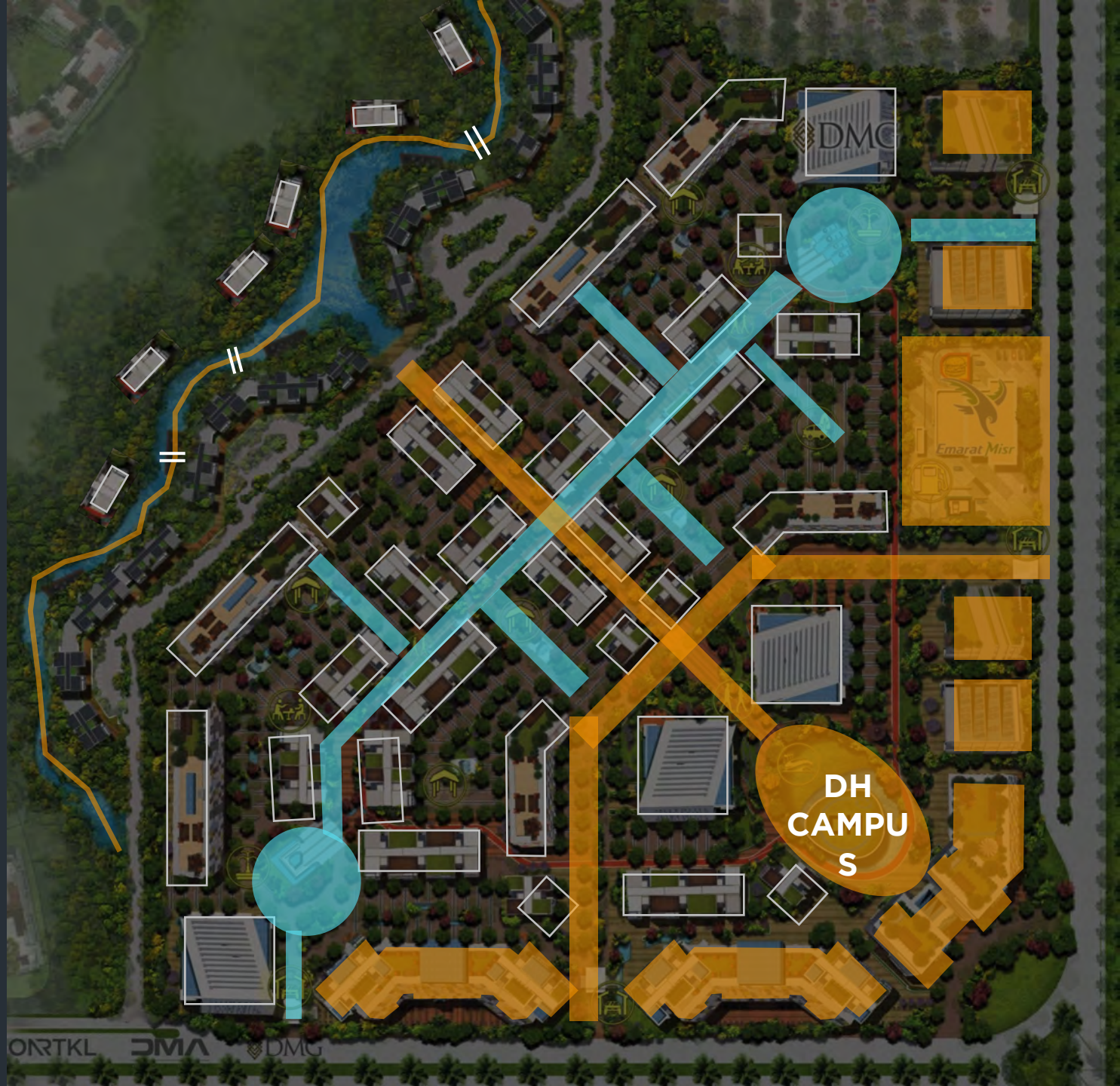


# HEARTWORK KEY

 BUILDINGS

 COMMERCIAL

 OFFICES





# HEART WORK FACILITIES



**Access Control**



**24/7 surveillance cameras  
for open Spaces**



**Physical security  
service**



**Standby generators**



**High speed  
internet**



**Borderless Networking, routing,  
switching & security**



**Triple play**



**Special Needs  
Friendly**



**Parking system  
management**



**Interactive media**



**Data Center**

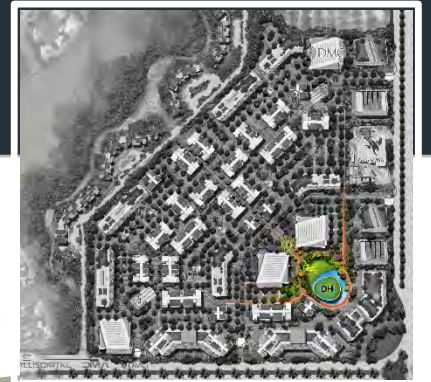
# BUILDING TYPES

- SHOWROOM - 1
- SHOWROOM - 2
- STRIP MALL
- G & GO
- HQ 5000
- HQ 50 - S
- HQ 50 - L
- HQ 500 - A
- HQ 500 - B
- HQ 500 - C
- HAPPY HUB
- GAS STATION





# DH CAMPUS PLAN



# DH CAMPUS PROGRAM

## INDOORS :



**Workstations**



**Shared Value Meeting  
Rooms**



**Training center**



**Food court**

## OUTDOORS :



**Commercial :  
Kiosks & F&B**



**Demo area & outdoor  
coworking spaces**



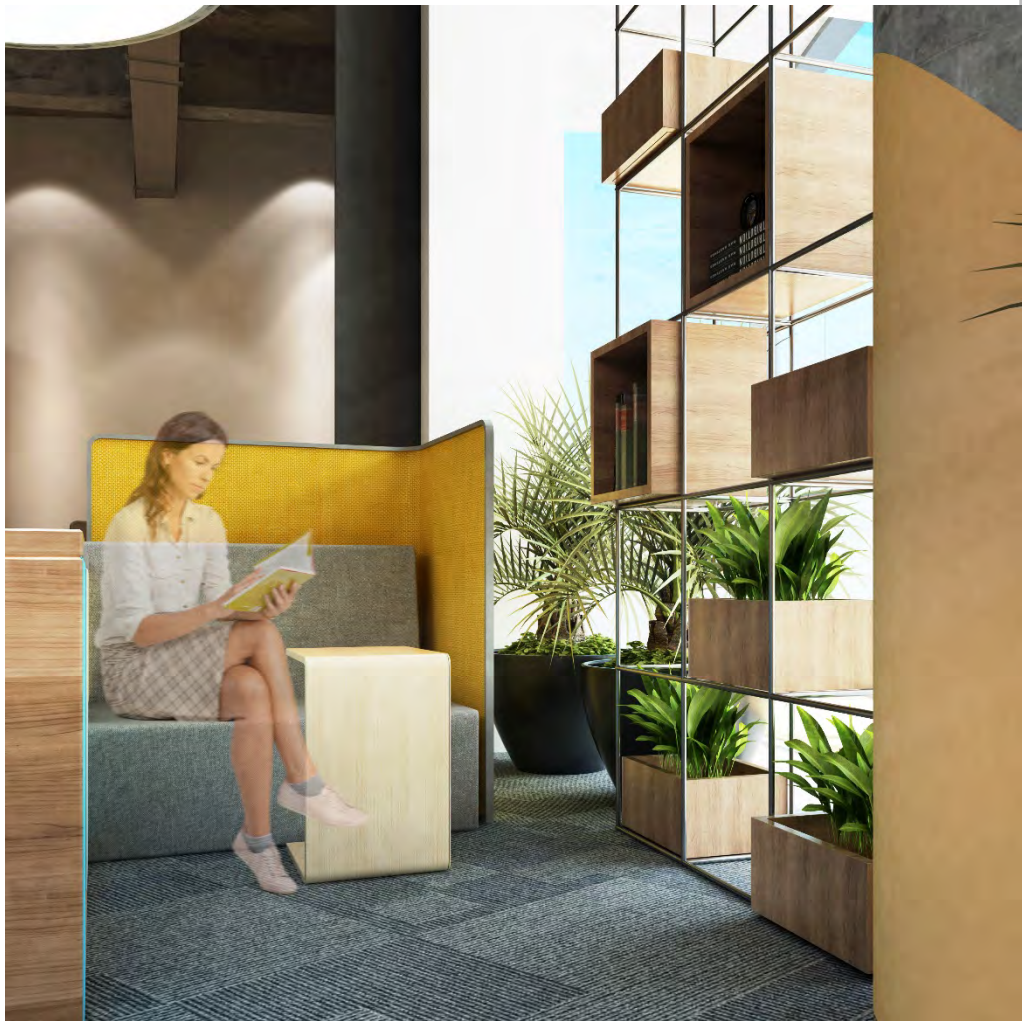
**Zen garden**



**Sports area**



# DH CAMPUS



**WORKSTATIONS**



# DH CAMPUS



SHARED VALUE MEETING ROOMS



# DH CAMPUS



TRAINING CENTER



# DH CAMPUS



DEMO AREA



COMMERCIAL : KIOSKS & F&B



# DH CAMPUS



PLAYFUL SETUPS, SEATING ARRANGMENTS



# DH CAMPUS



OUTDOOR CO-WORKING SPACES



# DH CAMPUS



SPORTS AREA

ZEN GARDEN



# GRAB & GO





# GRAB & GO PROGRAM



**Hairdresser**



**Laundry**



**Pharmacy**



**Bookstore**



**Convenient store**



**Nursery**

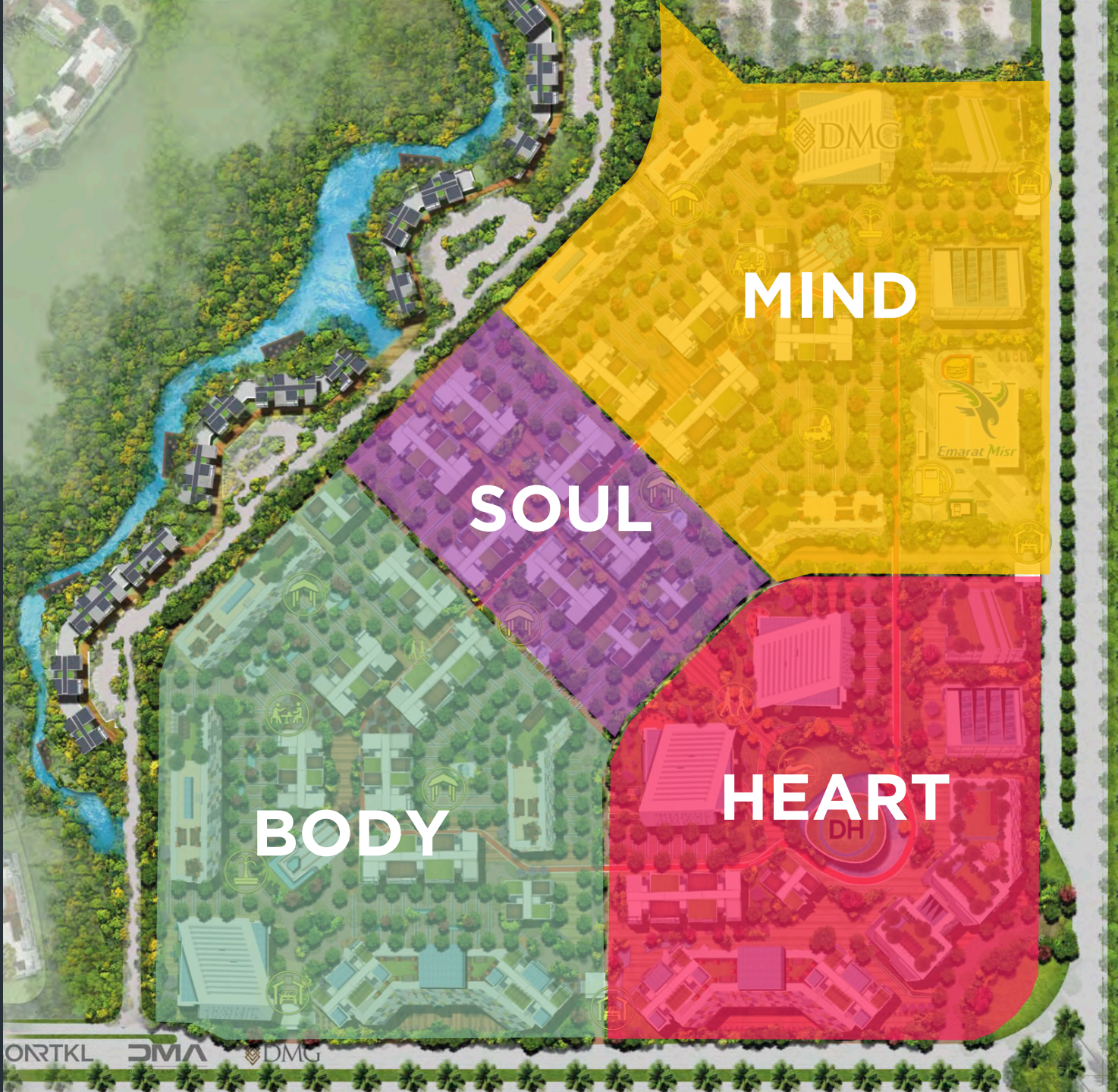


**GYM**



**Wellness Clinic**

# HEARTWORK MASTERPLAN





# PHASE 01





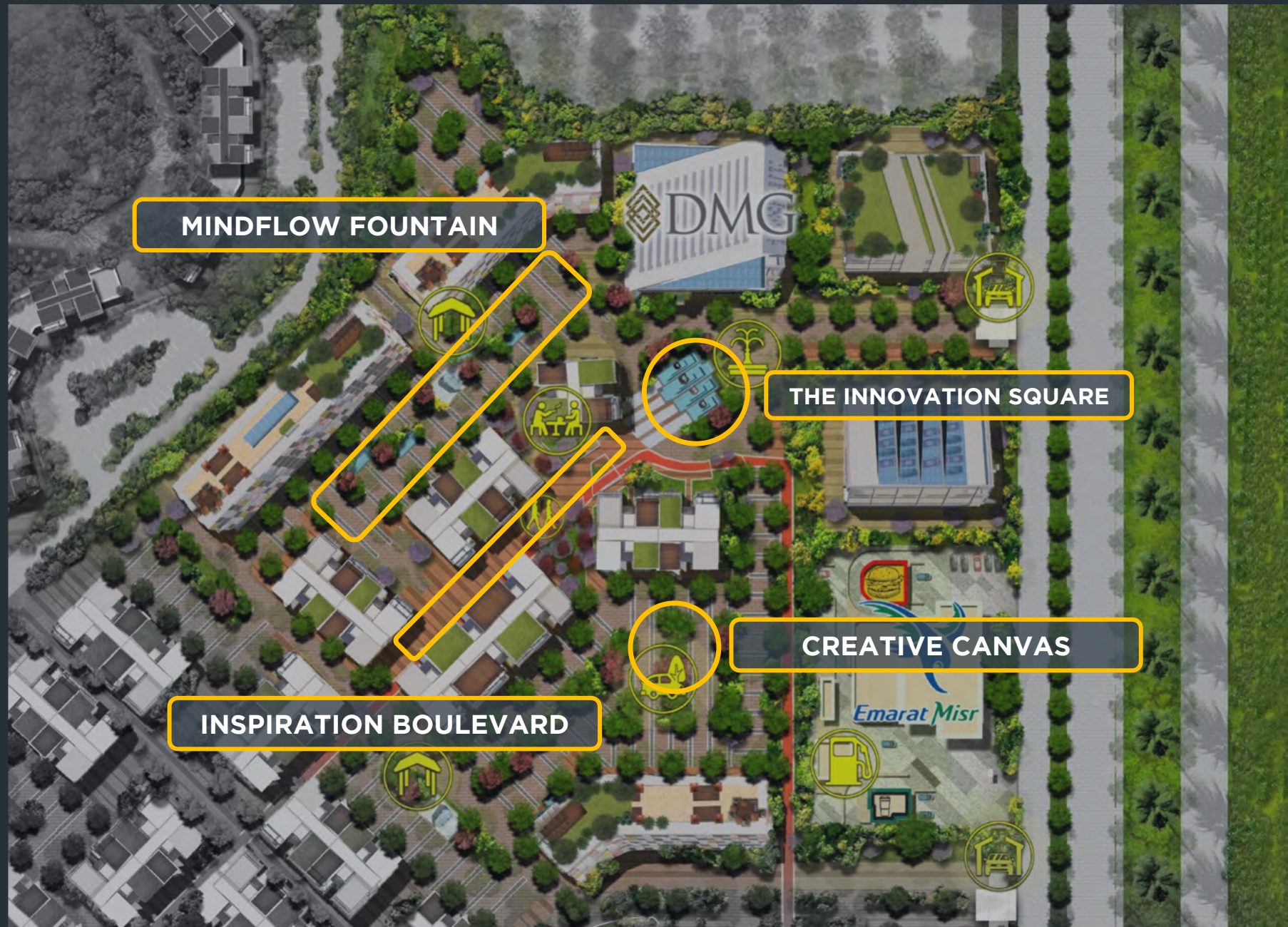
# PHASE 01

## THE MIND



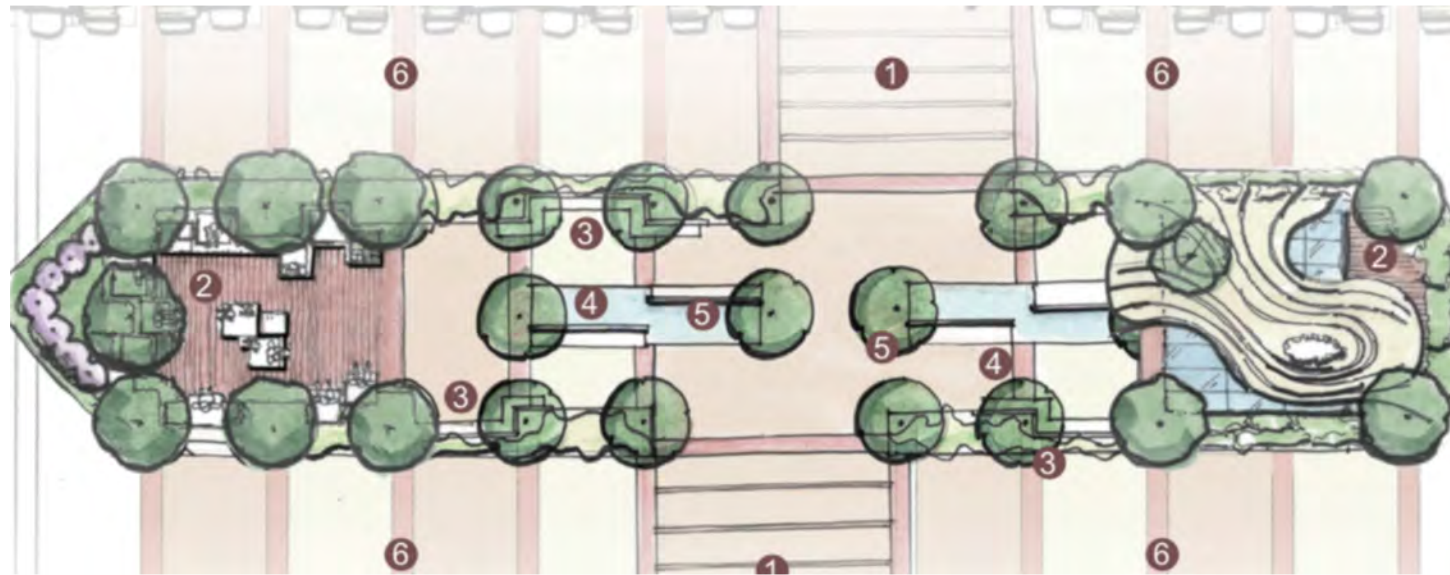


# PHASE 01 THE MIND PILLARS





# THE MINDFLOW FOUNTAIN



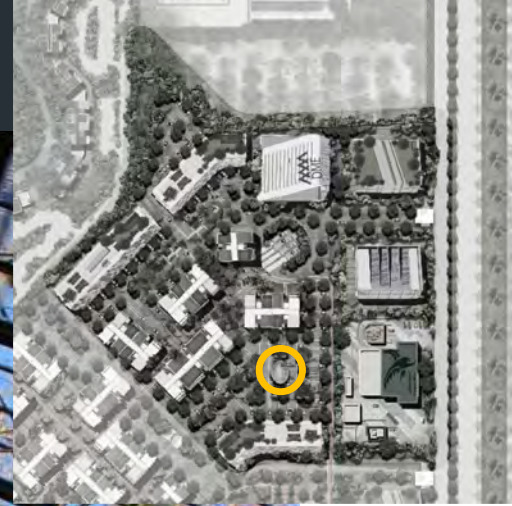


# THE INNOVATION SQUARE





# CREATIVE CANVAS





# THE INSPIRATION BOULEVARD





# BUILDING NUMBERS



BUILDING #	TYPE
------------	------

01	SR
02	SR
03	HQ - 500 - E
04	HQ - 50 - L
05	HQ - 500 - D
06	HQ - 500 - C
07	HQ - 500 - B
08	HQ - 500 - A
09	HQ - 50 - S
10	HQ - 50 - L
11	HQ 5000



---

# PHASE 1 - PRODUCT MIX

---



# PRODUCT MIX - PHASE 1 THE MIND

	Building Count	Total Sellable BUA
HQ-50L	2	15,980
HQ-50S	1	9,000
HQ-500A	1	1,440
HQ-500B	3	6,480
HQ-500C	1	3,280
HQ-5000	1	8,255



# HQ500



HQ  
500  
COMPANY  
HAPPY  
HEART  
SOUL  
BODY

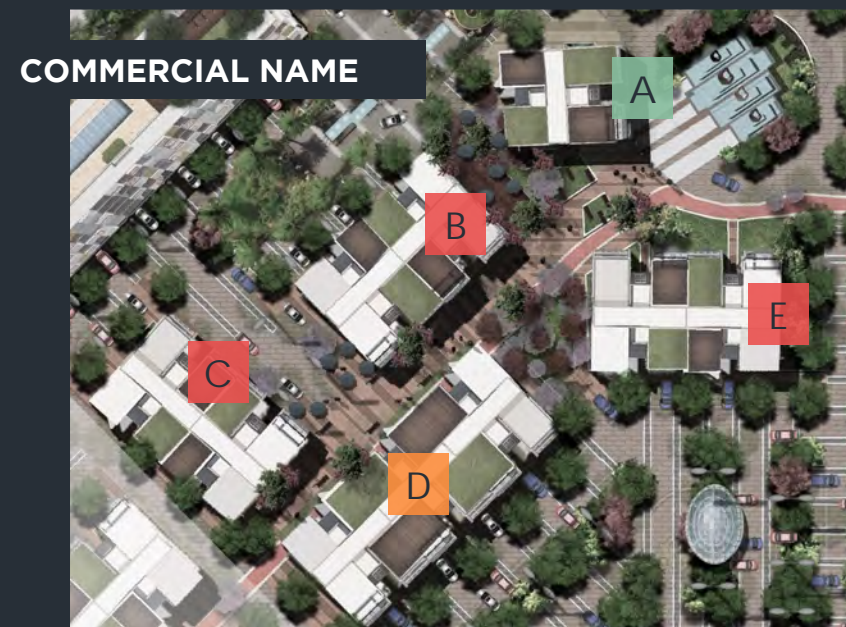
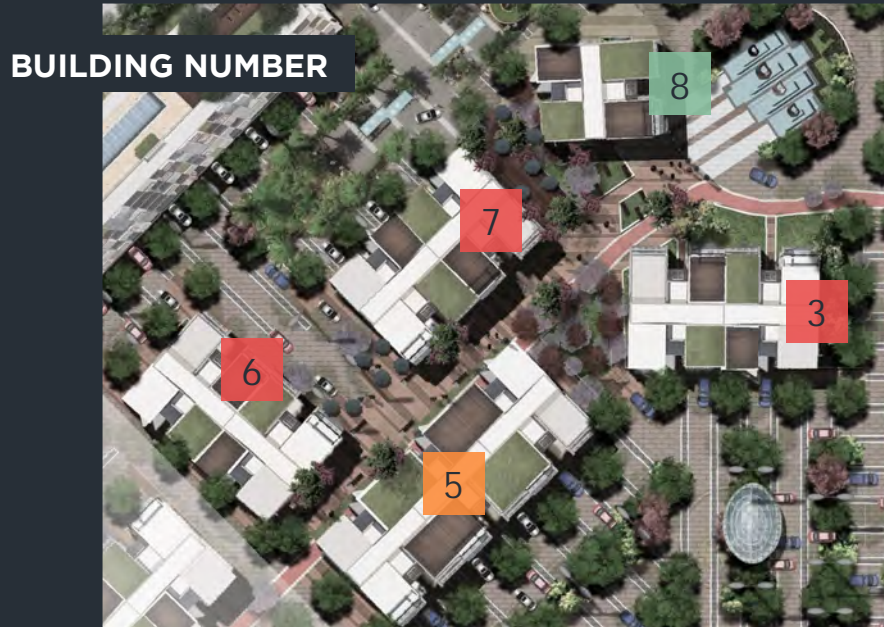
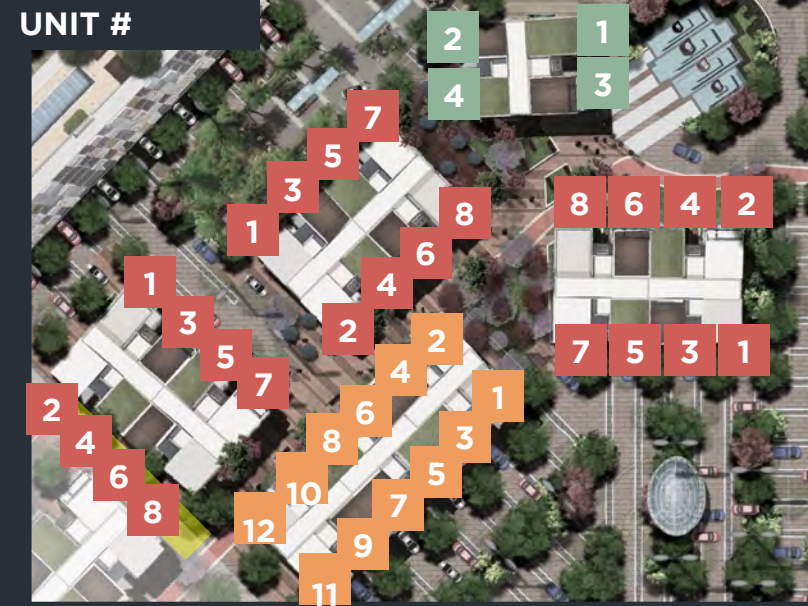
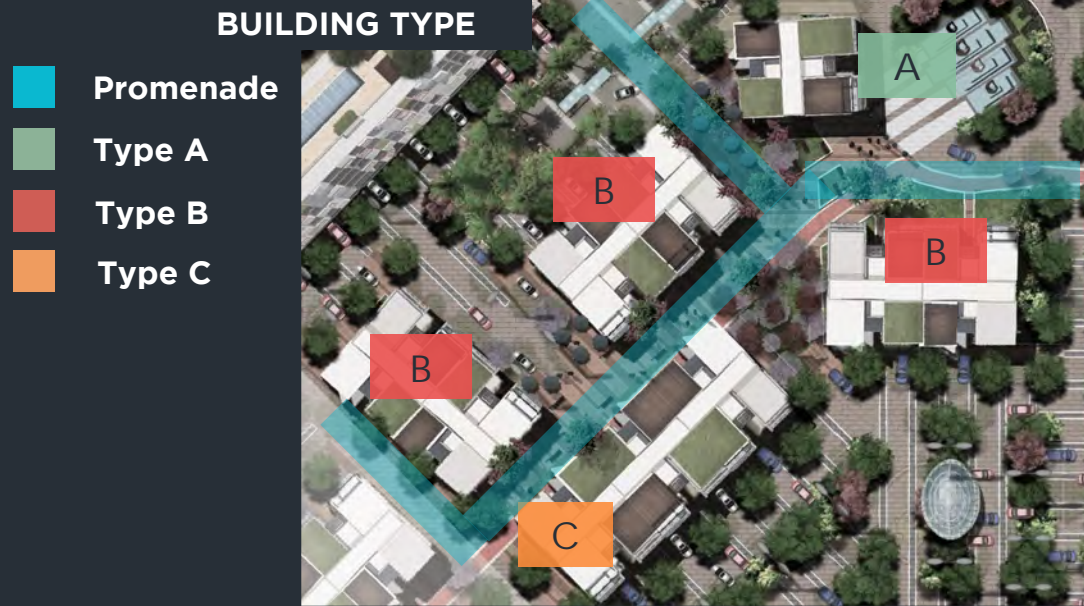
C4

PARKING 182-01  
PARKING 182-02  
PARKING 182-03

HQ500



# HQ500 BUILDING





# HQ500 BUILDING ANATOMY

#1 360 4F	#3 360 4F
#2 360 4F	#4 360 4F

HQ500-A  
BLDG #: 8

#1 270 3F	#3 265 3F	#5 315 3.5F	#7 270 3F
#2 230 2.5F	#4 315 3.5F	#6 225 2.5F	#8 270 3F

HQ500-B  
BLDG #: 3,6,7

#1 270 3F	#3 265 3F	#5 315 3.5F	#7 265 3F	#9 315 3.5F	#11 270 3F
#2 230 2.5F	#4 315 3.5F	#6 225 2.5F	#8 315 3.5F	#10 225 2.5F	#12 270 3F

HQ500-C  
BLDG #:5



# HQ 500 - BUILDING SPECS: CORE & SHELL



**Electricity,  
communications and  
information tie ins only**



**Main entry door for office**



**Fiber optics connection**

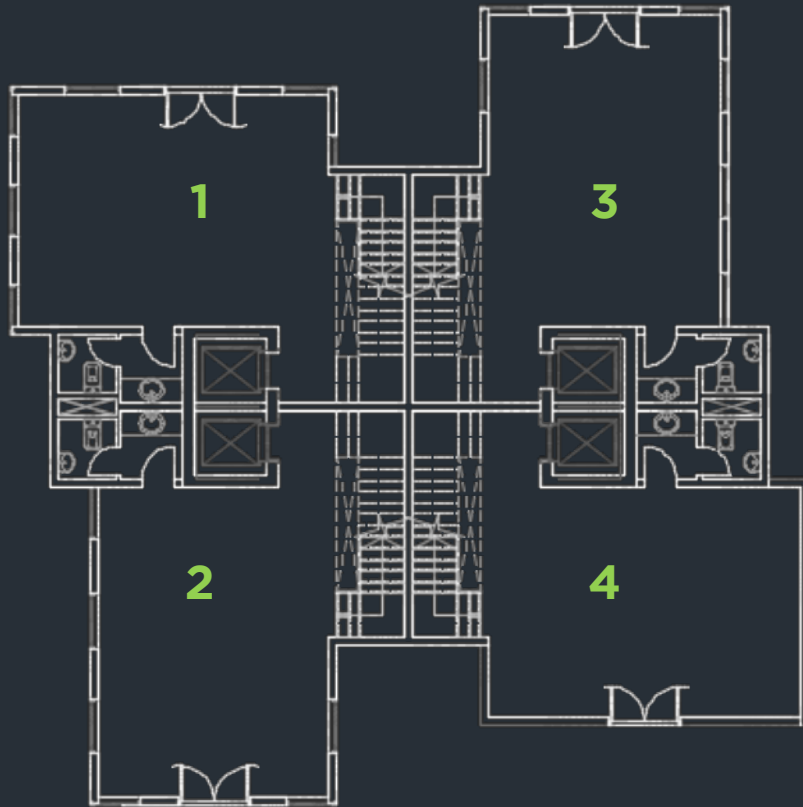


# HQ-500

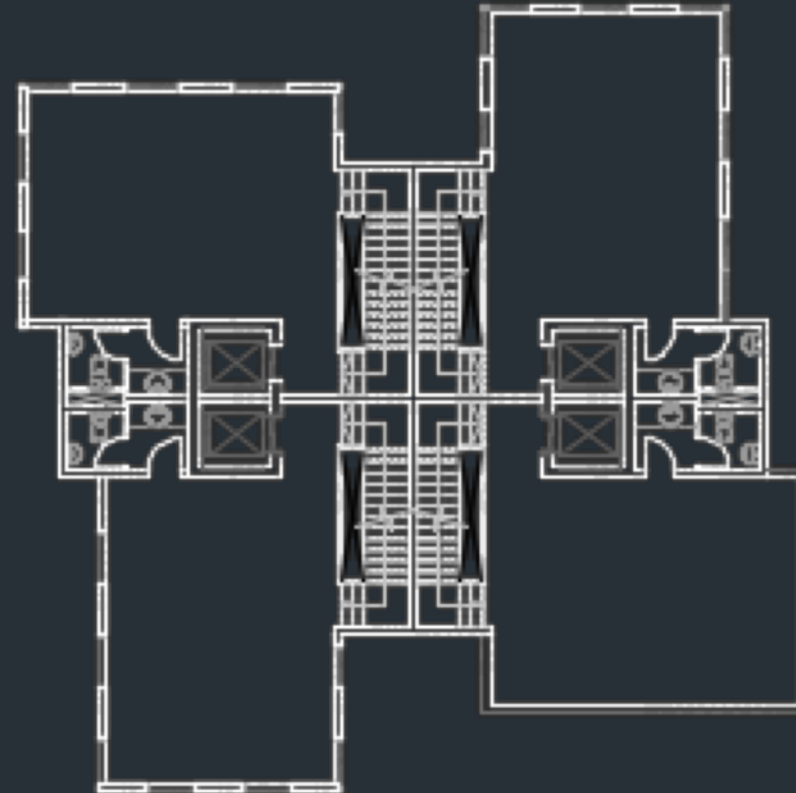
## TYPE A

4F 

UNIT NUMBER	AREA
01	360
02	360
03	360
04	360



GROUND FLOOR



TYPICAL FLOOR



# HQ-500

3F



2.5F



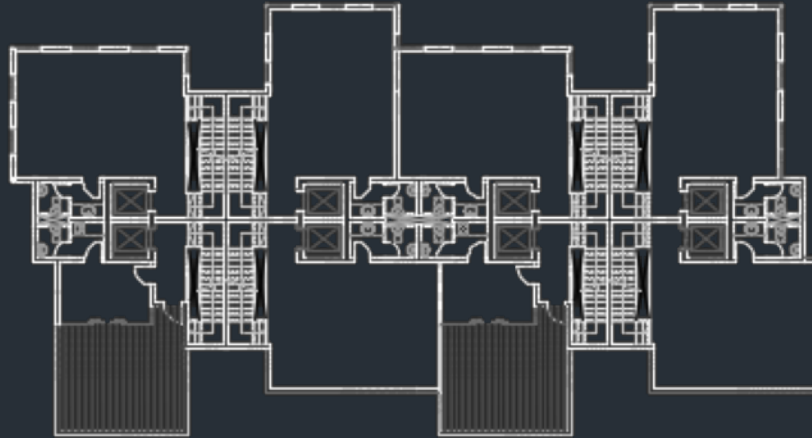
3.5F



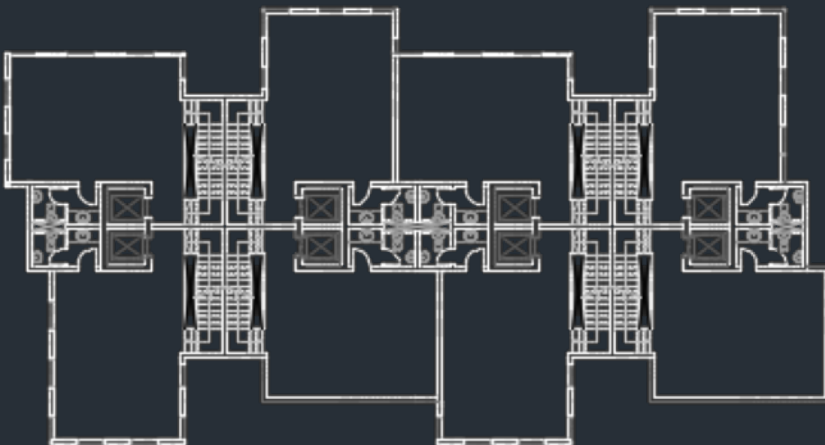
## TYPE B



**GROUND FLOOR**



**SECOND FLOOR**



**FIRST FLOOR**



**ROOF FLOOR**

**UNIT NUMBER**

**AREA**

01	270
02	230
03	265
04	315
05	315
06	225
07	270
08	270



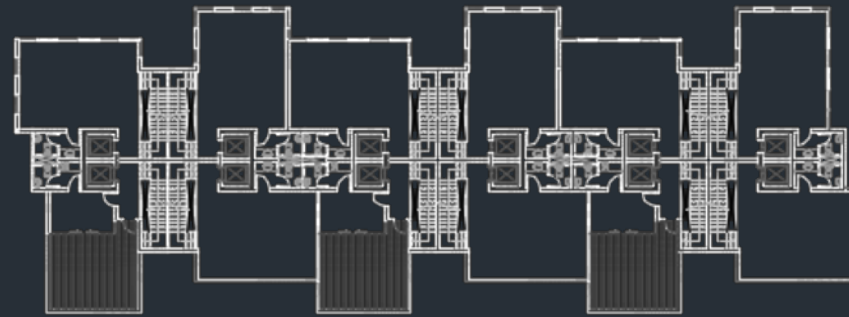
# HQ-500

## TYPE C

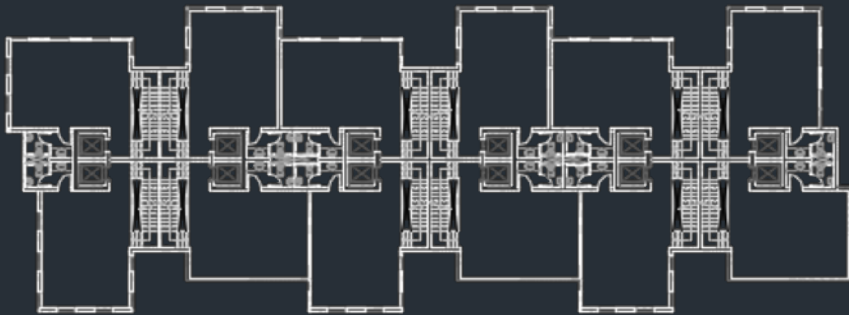
- 3F
- 2.5F
- 3.5F



**GROUND FLOOR**



**SECOND FLOOR**



**FIRST FLOOR**



**ROOF FLOOR**

UNIT NUMBER	AREA
01	270
02	230
03	265
04	315
05	315
06	225
07	265
08	315
09	315
10	225
11	270
12	270



# HQ50





# HQ50





# HQ 50 - BUILDING SPECS: FULLY - FINISHED



**Fire fighting system**



**24/7 surveillance cameras for open Spaces**



**Quality finished and equipped rest rooms**  
(ceramic ,paints, false ceilings)



**Quality finishing for building core** (Marble, false ceilings, paints)



**Garbage Room in each floor**



**Double glazed curtain wall system, aluminum cladding glass windows**



**1External walls : “ Based on building type”**



**Quality finished and equipped Pantry in each floor**



**Fiber optics connection**



**A/C systems for building cores**



**High speed Elevators**



**Main entry door for office**



# HQ 50 - L

5F 



**GROUND FLOOR**

UNIT NUMBER	AREA
01	85
02	85
03	85
04	80
05	65
06	65
07	65
08	65
09	65
10	65
11	85
12	85
13	65
14	65
15	80
16	65
17	65
18	65
19	65
20	65
21	80



# HQ 50 - L

5F 

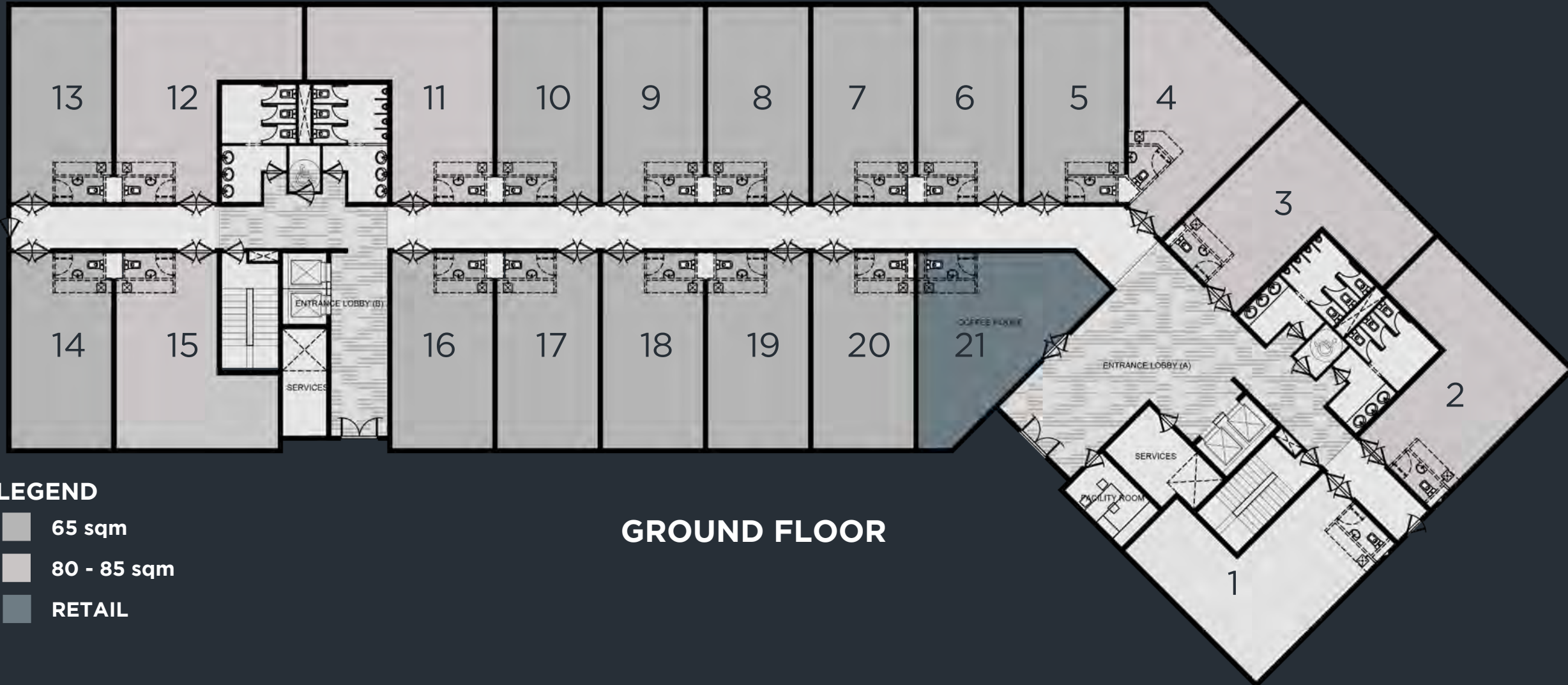


TYPICAL FLOOR

UNIT NUMBER	AREA
01	85
02	85
03	85
04	80
05	65
06	65
07	65
08	65
09	65
10	65
11	85
12	85
13	65
14	65
15	85
16	85
17	65
18	65
19	65
20	65
21	80
22	85



# HQ 50 - L





# HQ 50 - L



## LEGEND

- 65 sqm
- 80 - 85 sqm
- RETAIL

## TYPICAL FLOOR



# HQ 50 - S

5F



**GROUND FLOOR**

UNIT NUMBER	AREA
01	105
02	65
03	65
04	85
05	85
06	65
07	65
08	65
09	55
10	65
11	65
12	65
13	85
14	85
15	65
16	65
17	85
18	65
19	65
20	65
21	55
22	65
23	65
24	65



# HQ 50 - S

5F

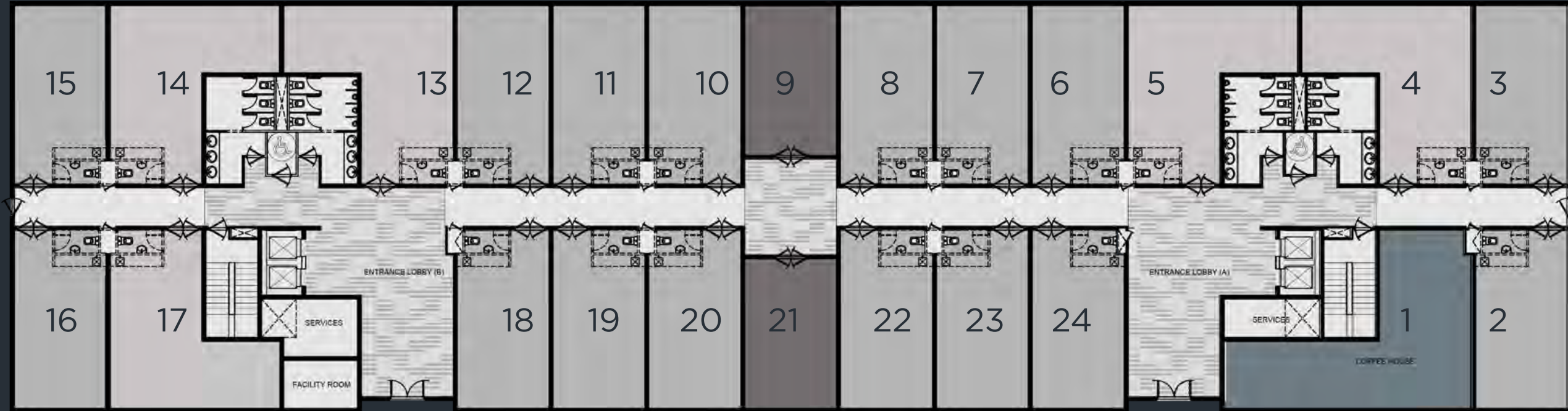


TYPICAL FLOOR

UNIT NUMBER	AREA
01	85
02	65
03	65
04	85
05	85
06	65
07	65
08	65
09	55
10	65
11	65
12	65
13	85
14	85
15	65
16	65
17	85
18	85
19	65
20	65
21	65
22	55
23	65
24	65
25	65
26	85



# HQ 50 - S



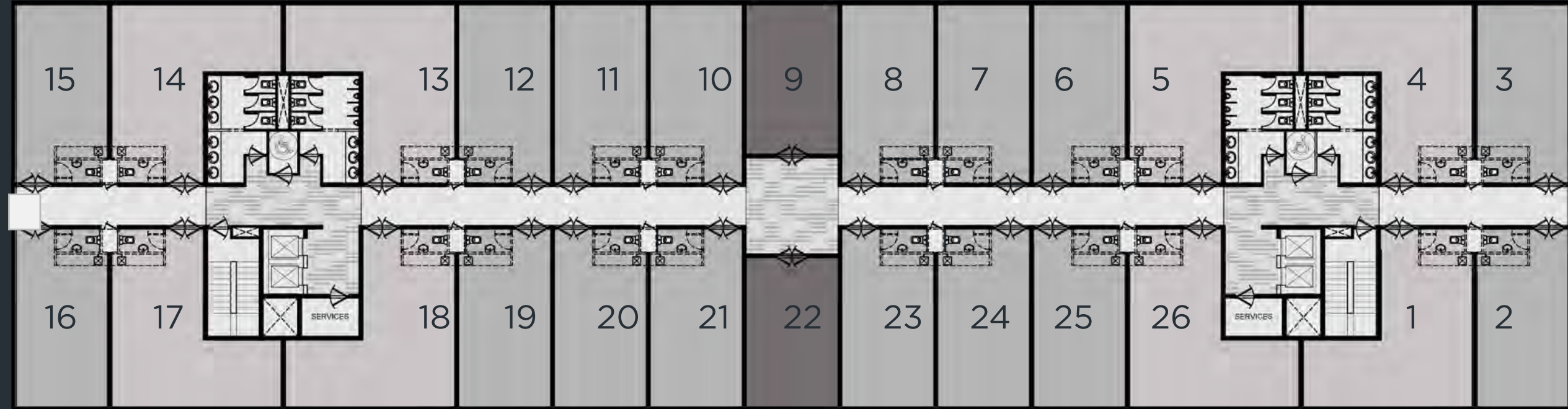
## LEGEND

- 55 sqm
- 65 sqm
- 80 - 105 sqm
- RETAIL

## GROUND FLOOR



# HQ 50 - S



## LEGEND

- 55 sqm
- 65 sqm
- 80 - 105 sqm
- RETAIL

## TYPICAL FLOOR



# HQ 50 - UNITS SPECS: FULLY - FINISHED



**Central AC system**



**Carpet flooring for  
units, paints for all  
walls, gypsum board for  
ceilings**



**Entry door for office**



**Each 65 m \* 4  
connection points**



# HQ5000



P-HQ



# HQ 5000



# HQ 5000 - BUILDING SPECS: CORE & SHELL



**24/7 surveillance cameras for open Spaces**



**Quality finished and equipped rest rooms**  
(ceramic ,paints, gypsum boards)



**Quality finishing for building core** (Marble, false ceilings, paints)



**High Speed Elevators**



**Main entry door for office**



**Fiber optics connection**



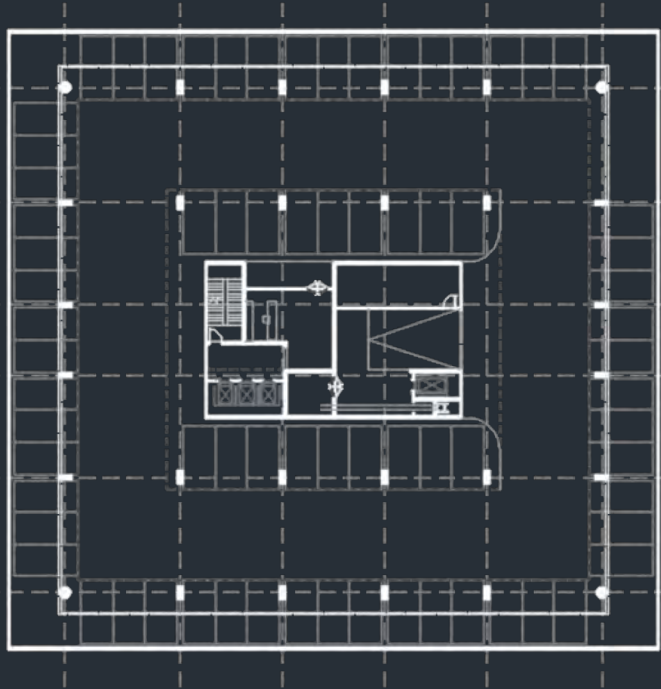
**A/C systems for building cores**



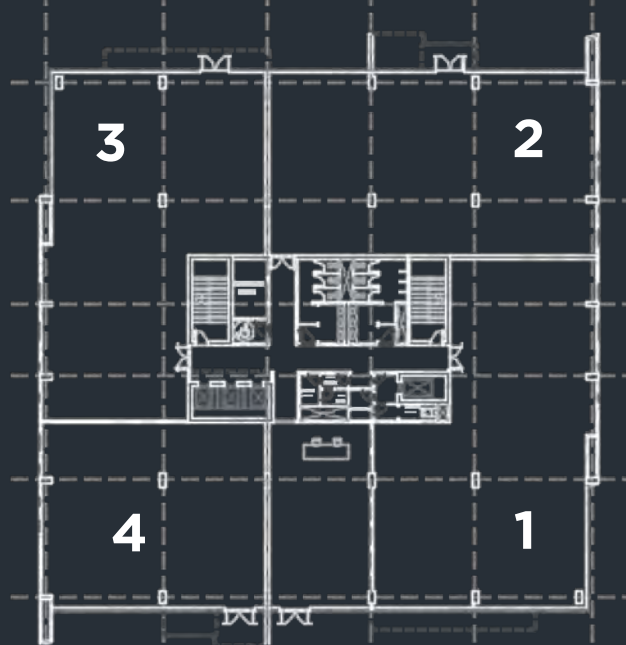
**Fire fighting system in building core**



# HQ 5000



**BASEMENT FLOOR**



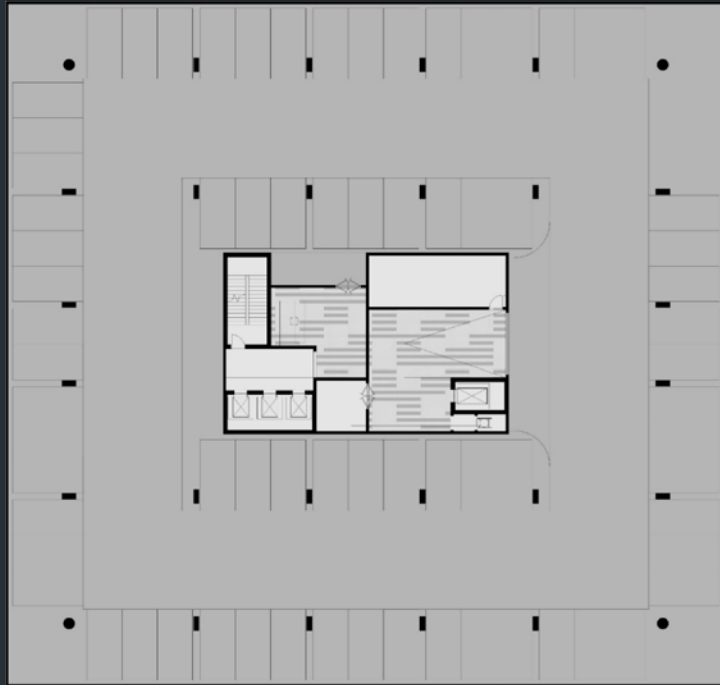
**GROUND FLOOR**



**TYPICAL FLOOR**

# HQ 5000

Total area = 8255 SQ



**BASEMENT FLOOR**



**GROUND FLOOR**



**TYPICAL FLOOR**



# HQ 5000



UNIT NUMBER	AREA
01	510
02	480
03	510
04	335

# HQ 5000

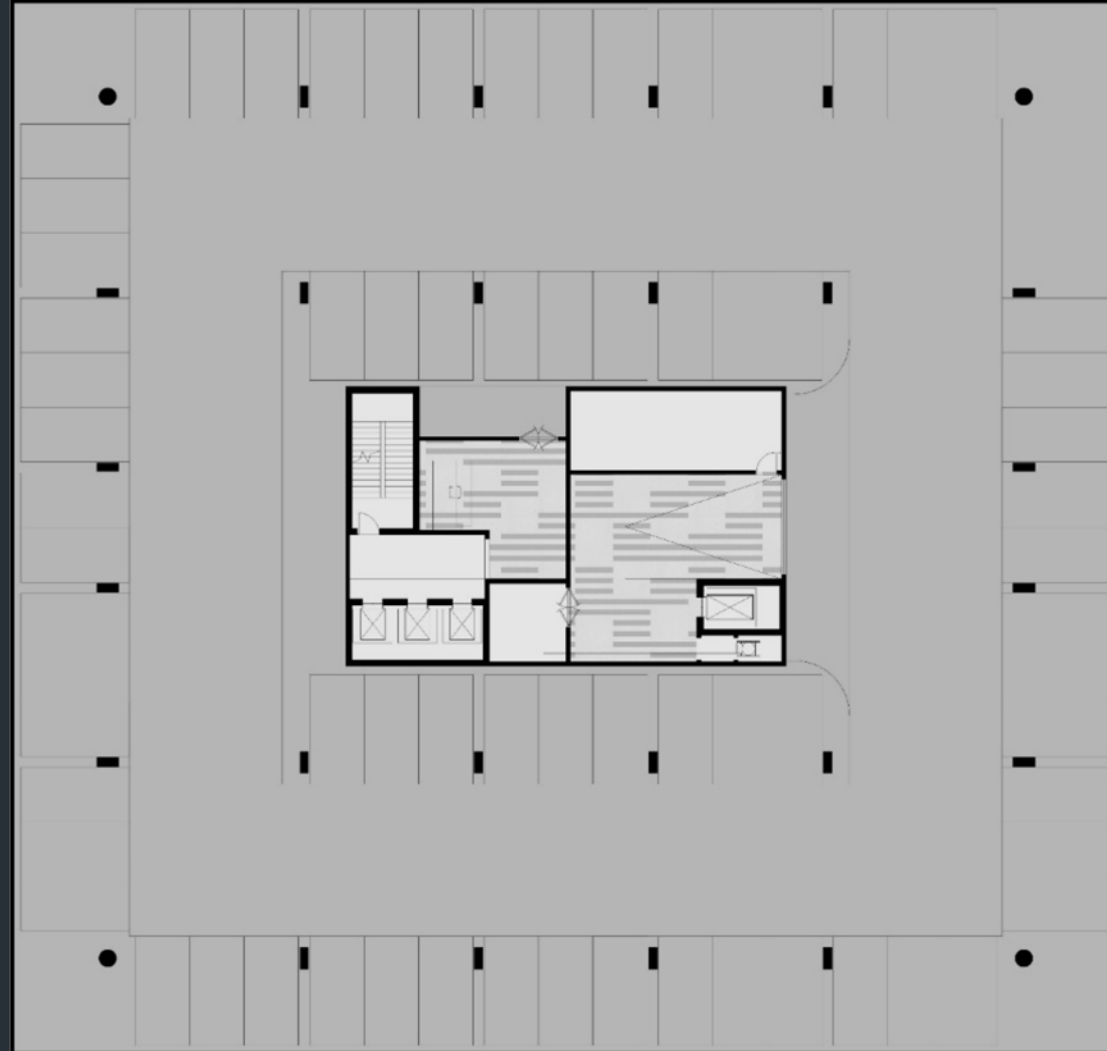


UNIT NUMBER	AREA
01	550
02	520
03	550
04	520

TYPICAL FLOOR



# HQ 5000



**BASEMENT FLOOR**

**AREA = 2920 SQ**

THANK YOU.